

— NO 23 —

MIH

— MINSTER HOUSE —

TO LET

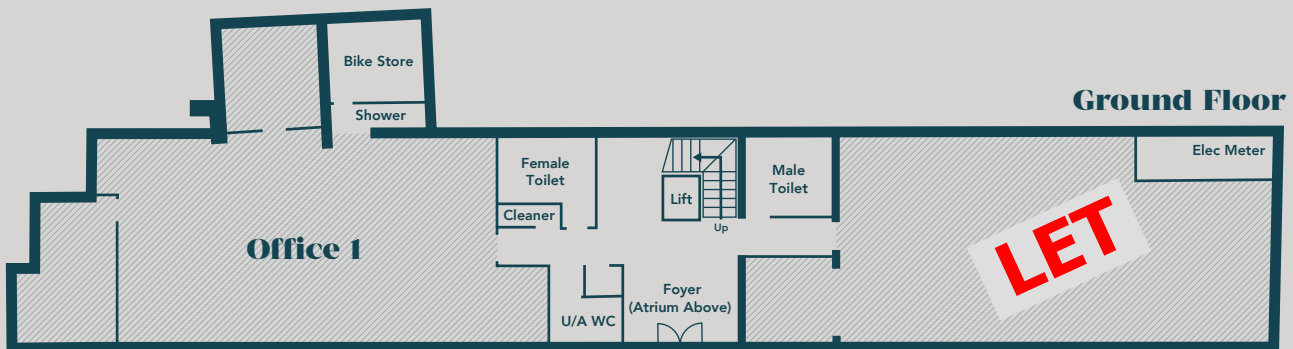
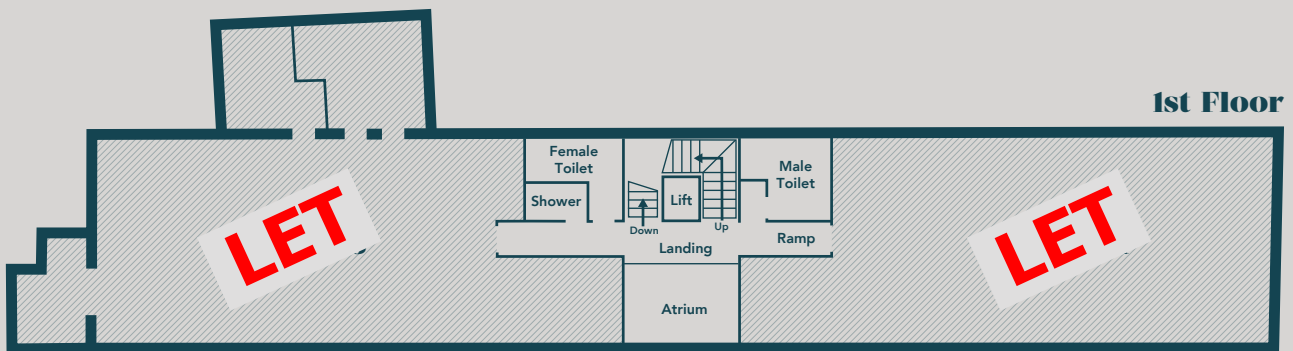
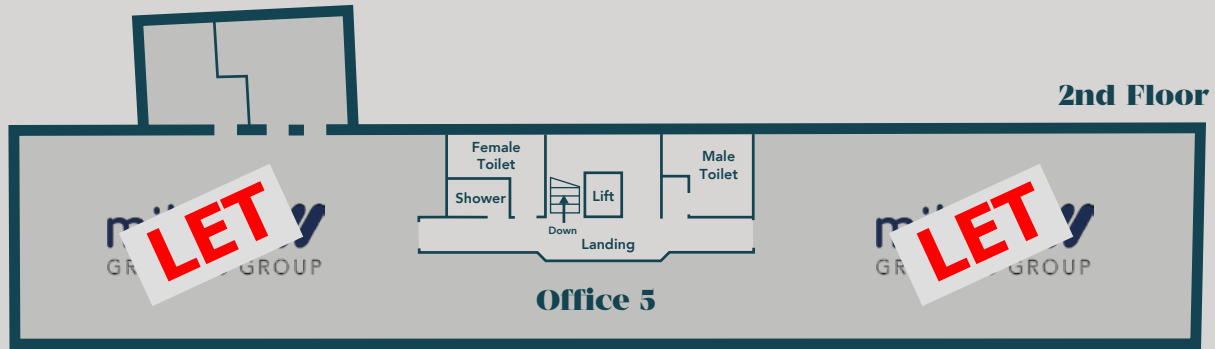
**Refurbished
Office Suites**



— 23 Flemingate, Beverley, HU17 0NP —

Part of Flemingate. The Premier retail Leisure and Commercial destination

Refurbished Office Suites



Minster House

Minster House was built in 1816 and used as a Warehouse in conjunction with the former Hodgson Tannery which was one of Beverley's major employers for over 150 years until its closure in 1978. The building has been carefully refurbished and now repurposed as a newly refurbished 3 storey office of over 9,000 sq. ft with approximately 3,000 sq. ft on each floor.

Flemingate

Minster House forms part of this 160,000 sq. ft retail, leisure and commercial destination comprising of over 16 acres of shops, cafes, restaurants, office space, cinema, hotel, College Campus, large children's play area and a 500 space multi storey car park. With brands such as Outfit, River Island and Debenhams, it is the fashion centre for the town and its environs.



Offices

The reception is a light and spacious two storey atrium.

Ground Floor Space

Office 1 – 1,600 sq. ft (148 sq m)
 Office 2 – 1,325 sq. ft (123 sq m)

First Floor Space

Office 3 – 1,822 sq. ft (169 sq m)
 Office 4 – 1,431 sq. ft (133 sq m)

Second Floor Space

Office 5 – 3,200 sq. ft (297 sq m)
 (Let to Miller Graphics). Miller Graphics is a £46 million turnover organisation providing solutions and services for all printing needs, covering both physical and online retail packages.

Car parking

27 car parking spaces within the 500 multi storey car park space divided as follows;

Ground floor – 9 spaces
 First floor – 9 spaces
 Second floor – 9 spaces

Extra spaces can be made available at additional cost.

Specification

- High quality carpeted clear open plan space
- Lift to each floor
- Shower facilities
- DDA compliant
- Secure cycle compound with shower
- Level access at rear into multi storey car park and Flemingate
- 24 hour security as part of Flemingate Centre

Terms

Further details from the letting agents.

NO 23

MH

MINSTER HOUSE



Enquiries

Developer



John Gouldthorp
 01482 320968
 Jcg@wykeland.co.uk
 www.wykeland.co.uk

Joint Agents



Tim Powell
 01482 325634
 Tim@scotts-property.co.uk
 www.scotts-property.co.uk



Ben Cooper
 01482 648888
 ben.cooper@pph-commercial.co.uk
 www.pph-commercial.co.uk