

Suite 2, DBC House,  
Grimsby Road, Laceby, DN37 7DP

---

# TO LET

---

Flexible office suites available on an  
'all-inclusive' basis

Within an established Business Park  
on the outskirts of Grimsby

Extends to approximately  
66.6 sq m (717 sq ft)

Car parking available

Excellent access onto the A46 and  
A18, providing direct links to Lincoln,  
Peterborough and the national  
motorway network (via the A180)

**Guide Rent £10,750 p.a.**

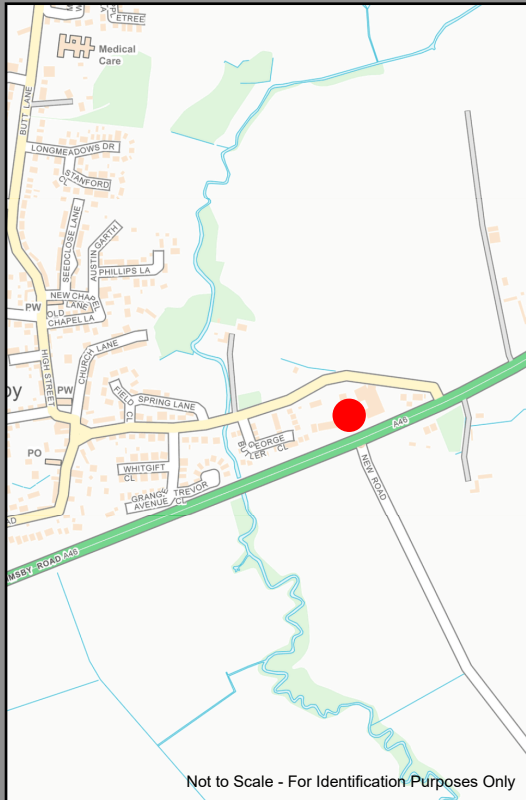
**Scotts**  
01472 267000





Suite 2, DBC House,  
Grimsby Road, Laceby, DN37 7DP

TO LET



Not to Scale - For Identification Purposes Only

**Scotts**  
01472 267000  
www.scotts-property.co.uk

## LOCATION / DESCRIPTION

Laceby is situated approximately 4 miles southwest of Grimsby town centre while the A46 Laceby bypass is adjacent to the southern boundary of the village. Laceby Business park is a popular office location, immediately adjacent to the A46 dual carriageway, in close proximity to the junction with the A18. The premises therefore benefits from excellent access to Grimsby, Lincoln, Peterborough, Humberside Airport and the national motorway network (via the A180).

The park currently comprises six detached office premises, with planning permission being granted for further expansion of another 3 self-contained office premises.

DBC House is the largest of the office premises within the Park and comprises a number of individual suites over two floors, occupied by a variety of local businesses.

## ACCOMMODATION

Suite 2                      66.6 sq m            (717sq ft)

## RATEABLE VALUE

The new occupier will be responsible for the payment of business rates at the property. The premises will require reassessment for rating purposes."

## DISPOSAL TERMS

The premises are available 'To Let' for a term of years to be agreed on an 'all-inclusive' basis at a guide rent of £10,750 per annum. This will include building insurance, electricity, heating, lighting, water, maintenance of common parts, car parking provision, landscaping and external repairs. The Tenant will therefore be responsible for the payment of their own Business rates, refuse collection and telecommunications.

## ENERGY PERFORMANCE RATING: D

## LEGAL COSTS

The incoming Tenant will be responsible for all parties reasonable legal fees incurred in this transaction, together with any Stamp Duty Land Tax that may be payable.

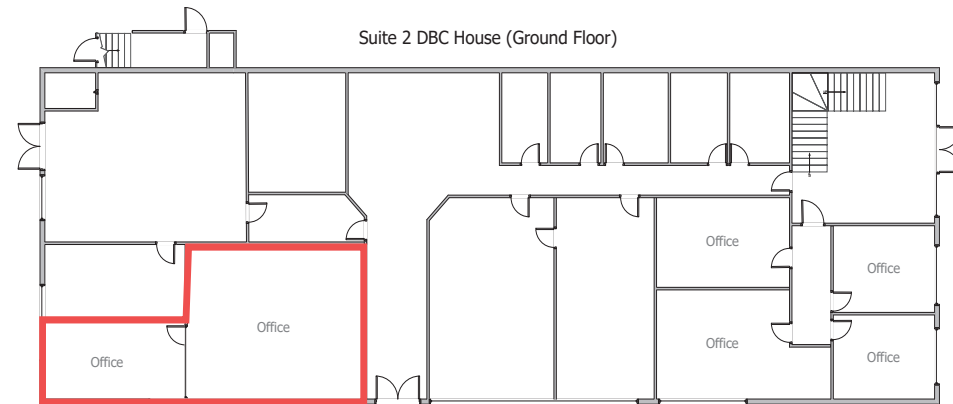
## VAT

The property is elected for VAT and therefore VAT will be charged on the rent and other chargeable supplies

## FURTHER INFORMATION AND TO VIEW

Contact Lawrence Brown - 07710 312712

[lawrence@scotts-property.co.uk](mailto:lawrence@scotts-property.co.uk)



Not to Scale - For Identification Purposes Only

Offices: Hull 66 - 68 Humber Street, HU1 1TU    Scunthorpe Sovereign House, Arkwright Way, DN16 1AL    Grimsby 12 Town Hall Street, DN31 1HN    **CS.5762**

Disclaimer: Scotts, a trading name of Scotts Property LLP, gives notice that: i) these particulars are a general outline only, for the guidance of prospective purchasers/occupiers and do not constitute the whole or any part of an offer or contract; ii) all descriptions, dimensions, references to condition and necessary permissions for use or occupation and other details contained herein are given in good faith and interested parties should not rely on them as representations or statements of fact and must satisfy themselves as to their accuracy; iii) they will not be liable in negligence or otherwise for any loss arising from the use of these particulars; iv) no representative of Scotts has any authority to make or give any representation of warranty or enter into any contract whatsoever in relation to the property; v) all prices and rentals quoted are exclusive of VAT.